



Zellige

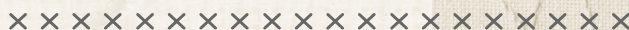


FUSIONS



by AGF

FREE PATTERN



Zellige

QUILT DESIGNED BY AGFstudio



MARRAKESH FUSION



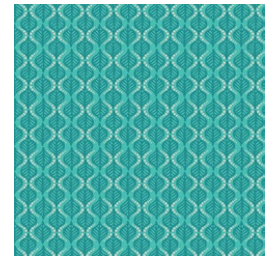
FUS-M-2000
EXOTIC FLORA MARRAKESH
by Pat Bravo



FUS-M-2001
DROPLET PETAL MARRAKESH
by Pat Bravo



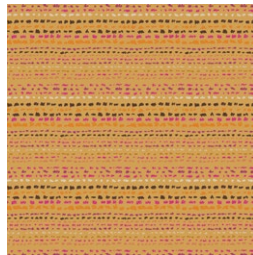
FUS-M-2002
BRIT BOUTIQUE MARRAKESH
by Pat Bravo



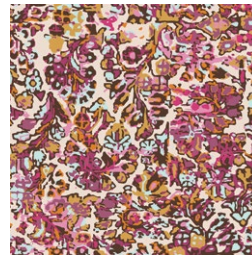
FUS-M-2003
TERRA STAMPS MARRAKESH
by AGF Studio



FUS-M-2004
MANDALA DROPS MARRAKESH
by Mister Domestic



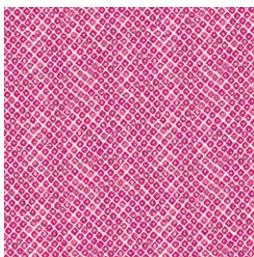
FUS-M-2005
TRAVELER MARRAKESH
by Sharon Holland



FUS-M-2006
TREASURED MARRAKESH
by April Rhodes



FUS-M-2007
ZANAFI MARRAKESH
by Katarina Roccella



FUS-M-2008
SEEDS OF MARRAKESH
by Katarina Roccella



FUS-M-2009
PRIMA FLORA MARRAKESH
by Bari J.





FINISHED SIZE | 56" x 64"

FABRIC REQUIREMENTS

Fabric A	FUS-M-2000	$\frac{7}{8}$ yd.
Fabric B	FUS-M-2002	1 $\frac{1}{4}$ yd.
Fabric C	FUS-M-2005	1 $\frac{1}{2}$ yd.
Fabric D	FUS-M-2003	$\frac{3}{8}$ yd.
Fabric E	FUS-M-2001	$\frac{3}{8}$ yd.
Fabric F	FUS-M-2006	$\frac{1}{4}$ yd.
Fabric G	FUS-M-2008	$\frac{1}{4}$ yd.
Fabric H	FUS-M-2007	$\frac{1}{3}$ yd.
Fabric I	FE-504	1 $\frac{1}{4}$ yd.
Fabric J	FE-501	1 $\frac{1}{2}$ yd.

BACKING FABRIC

FUS-M-2005 4 yds (*Suggested*)

BINDING FABRIC

Fabric **J** FE-501 (*Included*)

CUTTING DIRECTIONS

$\frac{1}{4}$ " seam allowances are included.

WOF means width of fabric.

- (30) 5 $\frac{3}{4}$ " x 5 $\frac{3}{4}$ " squares from fabric **A**.
- (44) 5 $\frac{3}{4}$ " x 5 $\frac{3}{4}$ " squares from fabric **B** and **I**.
- (24) 2 $\frac{1}{2}$ " x 2 $\frac{1}{2}$ " squares from fabric **B** and **C**.
- (28 or 56) 5 $\frac{3}{4}$ " x 5 $\frac{3}{4}$ " squares from fabric **C**.
- (8) 5 $\frac{3}{4}$ " x 5 $\frac{3}{4}$ " squares from fabric **D** and **E**.
- (5) 5 $\frac{3}{4}$ " x 5 $\frac{3}{4}$ " squares from fabric **F**.
- (4) 5 $\frac{3}{4}$ " x 5 $\frac{3}{4}$ " squares from fabric **G**.
- (12) 4 $\frac{1}{2}$ " x 4 $\frac{1}{2}$ " Fussy Cut squares from fabric **H**.
- (45) 5 $\frac{3}{4}$ " x 5 $\frac{3}{4}$ " squares from fabric **J**.
- (6) 1 $\frac{1}{2}$ " x WOF strips from fabric **J**.

CONSTRUCTION

Sew all rights sides together with $\frac{1}{4}$ " seam allowance.

This project is made out of HST, and we will be using the Magic 8 method.

Magic 8 method:

- Start by placing one 5 $\frac{3}{4}$ " square from fabric **I** and **A** right sides together.
- Mark a diagonal line across both diagonals on the wrong side of the top fabric square.
- Sew a $\frac{1}{4}$ " seam on both sides of the marked diagonal lines.
- Using your rotary blade or scissors cut the square into eighths as pictured below on figure #3 in Diagram 1
- You will cut a horizontal line, vertical line, and on both drawn diagonal lines.
- Open the blocks outward and lightly press.
- Be very careful to only press up and down, NOT back and forth so as not to stretch them.
- Your seam should be pressed (both layers) toward the darker color.
- For combination **I-A** use (18) 5 $\frac{3}{4}$ " x 5 $\frac{3}{4}$ " squares from each corresponding fabrics.

- Build rows **1, 2, 3, 6, 7, 8** in the order shown below. Note Fabric **C** orientation.



DIAGRAM 8

- Sew Row 1, 2, 3, 4-5, 6, 7, and 8 (See Diagram below)



DIAGRAM 9

